



## Features

Most sophisticated scheduling tool  
of a commercial available software

Ability to manage virtually any tournament format

Full Management of Multiple Locations

Complete Invoicing functionality

Complete Officials Scheduling

Multi-Season functionality

Full Multi-User mode - always recover security and online synchronization

Import/Export data

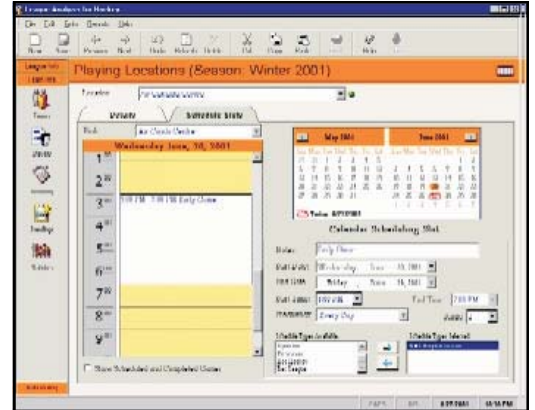
## Revolutionize Your League Management

Our software can help you to reduce the effort necessary to manage your leagues and tournaments while increasing your effectiveness. Our software provides a state-of-the-art interface that makes the League Manager product easier to learn and use than any other commercial league management product. So much so that we allow you to demo our full functionality at no charge.

Whether you are managing a number of leagues in a single rink/diamond or a single league across multiple locations, this is the perfect software solution. Set up an league configuration whether it is an adult league or a minor league. Decide how you wish to calculate points per game from a list of nine possible referees and automate the process of displaying our standings.

Ability to generate schedules. At the heart of our software is the most sophisticated scheduling engine on the commercial market. Define location availability and let our software generate schedules to meet any requirements.

Our tournament functionality is second to none. With a wide variety of tournament formats and the ability to further customize them virtually any tournament format can be achieved.



Use our complete calendaring functionality in a single click

Ability to track statistics. Our software tracks over 20 different game statistics or input and total calculated statistics. With that you can create any report you can imagine. Select your columns, selection conditions, report team or player and any date range. What you generate you can print.

Customize our maintenance. Change colors, time intervals, just about anything that makes sense.

## What's Inside

Customize your League

Tournament Format

Full Multi-User Support

Standings and Statistics

Invoicing

Our Company

Other Great Features

## The Last Stop in League Scheduling



Scheduling algorithms in other commercial packages consist of a basic round robin or double round robin scheduling. This is fine for most leagues, but not all. The League Manager provides a sophisticated Round Robin scheduling algorithm and a constraint-based primal method to develop schedules based on a series of constraints. Determine location availability, number of games per week, minimum days between games,

home and home series, home preferences, game time preferences, maximum consecutive home or away games and time and venue identical meetings. Enter our parameters and our algorithm will attempt to create a balanced schedule as possible. We have a large number of internal conditions as well that attempt to balance divisional, inter-divisional and inter-conference games. So let us solve

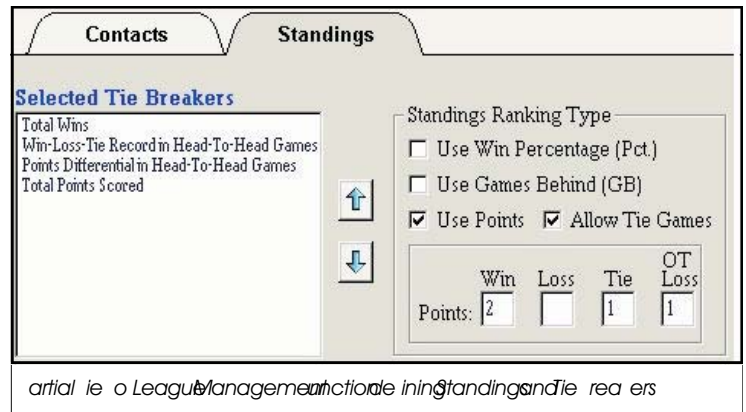
## Customize Your League

The first contact point with our software is the establishment of our league. We have designed the software to support both adult and minor leagues. You can enter adult teams and optional players or enter our players and assign them to teams. The software supports both peewee leagues.

Setting up our division alignment couldn't be easier. Decide how many divisions into zero, one or two conferences. Then decide how many divisions per conference will be required. One conference can have divisions and the other can have divisions. You can specify no conferences and only one division. The options are limitless.

A league can rank teams using a number of alternatives. You can specify the traditional FL or format points or a in point or tie etc. Use inning percentage if the FL or the custom G/LI or ML. To realize our tie-breaking algorithm is advanced as that used in the National Football League. Select from nine tie-breaking procedures and determine the order they are applied.

Customize our leagues to support either our basic or our advanced invoicing functionality.



Partial view of League Management software showing standings and tie breakers

## This is the most self-contained League Management and Tournament available to the market today

### Tournament Time

If you are looking for a single elimination tournament or a triple noc out end-of-season tournament our functionality will allow you to do it. We offer the most complete tournament functionality on the market and we have tightly integrated it with our league management and scheduling tools.

Single double and triple elimination formats are available that our software supports. Set up each round of your tournament with different parameters. First rounds games can be single

elimination while other rounds can be double or only no all the teams in the tournament or prolem our software will allow you to completely set up the tournament and assign teams to placeholders when you are ready. Manage our tournament through our printable race track experience. The full power of our functionality. Make a mistake and no problem correct the problem and the software updates the rest.

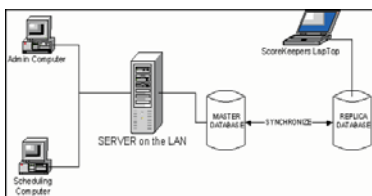
### Full Multi-User Support

Our products rolled out as a single user application. With the additional functionality that our software provides many of our users requested a version that could be accessed by different staff. This led to the roll-out of a complete multi-user solution.

Our software is data aware and can be moved to any location on a LAN through our built-in utilities. Users on different machines can work on the Master or the LAN. We have also added the ability to replicate the Master to a machine's local hard drive allowing the computer

Laptop to be disconnected from the LAN, allow updates like game results and then later will synchronize data with the Master.

With the distributed name of a full user security model has been implemented. Generate user profiles and assign to our different users. Your data is restricted to user who have a valid login. We have added complete backup, restore and recovery procedures so you can fully protect our data.



Multi-User network solution

## Standings and Statistics

Generating and printing standings is a required feature that we have provided enhancements to that allow you to highlight the professionalism with which our our leagues. The layout of our standings is customizable based on our league setup. If you do not credit overtime losses, this column will not be shown. We provide additional columns such as record during past games, current streak, home record, and divisional and conference records. Since our tiebreak algorithm is executed automatically over time, you generate our standings, we also provide the details of how ties are broken between a set of teams.

Of course, we also allow you to generate statistics for our league teams and players. Our statistics function is one of the most flexible and easy to use. Select either a team or player report, pick the columns you wish to display from a check list, display them in an order, enter a selection condition, i.e. Games Played, and click the compute button to generate our statistics. Click on a column header to re-sort our statistics by that column. You can run our report for the entire league or a single division or team. Select all dates or enter a specific date range. Whatever

Western Conference	Games Played	Wins	Losses	PF	PA	Pct.	GB	Past 10	Streak
<b>MidWest</b>									
San Antonio Spurs	34	22	12	2388	1945	<b>.647</b>	-	7-3	W 4
Denver Nuggets	34	20	14	2062	1934	<b>.588</b>	2	5-5	L 3
Dallas Mavericks	34	20	14	2552	2198	<b>.588</b>	2	5-5	W 2
Houston Rockets	34	18	16	2682	2267	<b>.529</b>	4	5-5	W 2
Vancouver Grizzlies	34	15	19	2120	2305	<b>.441</b>	7	8-2	L 2
Utah Jazz	34	15	19	1900	2530	<b>.441</b>	7	4-6	W 1
Minnesota Timberwolves	34	14	20	1966	2572	<b>.412</b>	8	4-6	W 3
<b>Pacific Division</b>									
LA Lakers	34	19	15	2480	2043	<b>.559</b>	-	5-5	W 4
Phoenix Suns	34	18	16	2470	2303	<b>.529</b>	1	5-5	W 2
Seattle Super Sonics	34	18	16	2442	2394	<b>.529</b>	1	5-5	W 1
Golden State Warriors	34	17	17	2060	2331	<b>.500</b>	2	5-5	W 2
Los Angeles Clippers	34	17	17	1994	2038	<b>.500</b>	2	3-7	W 1
Portland Trail Blazers	34	15	19	2014	2291	<b>.441</b>	4	5-5	W 3
Sacramento Kings	34	11	23	2211	2568	<b>.324</b>	8	3-7	L 2

**Tie Breaker Notes:**

Denver Nuggets - Won the Tie Breaker based on better Win-Loss-Tie Record in Divisional Games with a value of 0.583.  
 Golden State Warriors - Won the Tie Breaker based on better Win-Loss-Tie Record in Head-To-Head Games with a value of 1.000.  
 Vancouver Grizzlies - Won the Tie Breaker based on better Win-Loss-Tie Record in Head-To-Head Games with a value of 1.000.  
 Phoenix Suns - Won the Tie Breaker based on better Win-Loss-Tie Record in Divisional Games with a value of 0.667.

report you see on our screen, you can send to the printer.

Once you have designed our report, you can save it as a template and use it over and over again, or create additional reports starting with that template.

With one of the most powerful interfaces, so that we will reduce the time requirements managing your leagues.

INVOICE		
Invoice Date: June 29, 2001	XRef No.: x-56760-013	
Due Date: September 27, 2001	Invoice: 4598549	
Team: Toronto Maple Leafs	Player: Mats Sundin	
Description: Invoice for playing in the National Hockey League	Amount	\$5,000.00
Notes: This is a sample invoice that is payable by each player of the Toronto Maple Leafs.	Discount	\$0.00
	GST	\$100.00
	PST	\$400.00
Terms: This payment is due before the 10th game of the season.	TOTAL	\$5,500.00

Sample printed invoice

## Invoicing

If you are running a league, good chance players and teams are paying you to do so. Our invoicing function closely ties players and teams to invoices and their payments. Invoice information can be added to team or player. You can define our payment amount at the league level and new invoices will default to this amount.

Along with invoices, payments are also accepted. So, you add payments, the invoicing process is reduced, and payment receipts can be generated along with reports identifying overdue amounts.

After an amount is paid and their percentages of total change so, you can ensure that there is no impact to already existing invoices at a different rate.



## League Management Software

Analzer Software

mail in o anal zerso t are com

The most revolutionar league management software

WWW IRLAND SOFTWARE COMPANY

Analyzer Software is a web based business developing Sports Management Software for everyday athletes, sports teams and leagues.

Analyzer Software benefits from a wide range of sports participation and over 25 years of experience in the software industry. Our League Management line of products are our most popular. Used by hundreds of leagues around the world, our scheduling and tournament functionality is unrivalled by any other product in the market. Supporting Baseball, Basketball, Football, Soccer, Hockey and Curling, we are releasing other sports seasonally. We have released our generic sports product that can be customized for virtually any sport.

Our software runs on the desktop, but will soon be extending its reach. Providing the option to run the database using SQL Server will allow larger organizations to share data throughout the company. We will also continue to integrate our products with the web.

## Other Great Features

### Import port o ata

To get ou started on the right foot e have a complete Team la er and O icials import tool o need to start our software enter- ing is o pla ers let our software handle that pain or ou

Our software has a su icient num ero reports or most organizations ut there are still those ho ish to manage their data outside o our product We have a ull e port unction so that ou can get the data out o our system and into hatever tool ou use to manage orm letters custom reports etc

### la er rating

Constructing and running a draft is ver time- consuming and doesn't al a send up ith ver alanced teams Our software ta es into consideration actors such as age gender pla ers ill pla er positions to evenl distri- ute pla ers to teams ven coaches and as- sistants can e assigned eed to start the

draft ith some no n pla ers grouped together o pro lem ssign those pla - ers irst and the draft ith ta e those into consideration hendistri uting pla ers

onit li e the draft results You can restore a previous cop o our data ase or ith a clic o autton unassign all pla ers as- signed during the draft

### O icials Scheduling

Once ou have created our league or tour- nament schedules our software allo s ou to assign o icials to those games Input O icials calendars to ensure proper alloca- tions rint our o icials schedules li e team sschedules

### Complete Customization

Onesoftare product does not fit all situa- tions There ore anal zerso t are has numerous areas here ou can customize

the software to act the a ou want to Over data ase maintenance a les can e customized so ou see onl the data ou want

Time phone current ormats are ut a e o the data ormats than can e cus- tomized oes our league use the term ra instead o Tie chang the term or atie to hatever ou want

Importing TML to the e Man users ind the a illit to turn o report headers and ooters to ea ighelp onit ant to sho home a a teams turn that o and schedules are printed ith generic terminology o nload and chec out all the great eatures